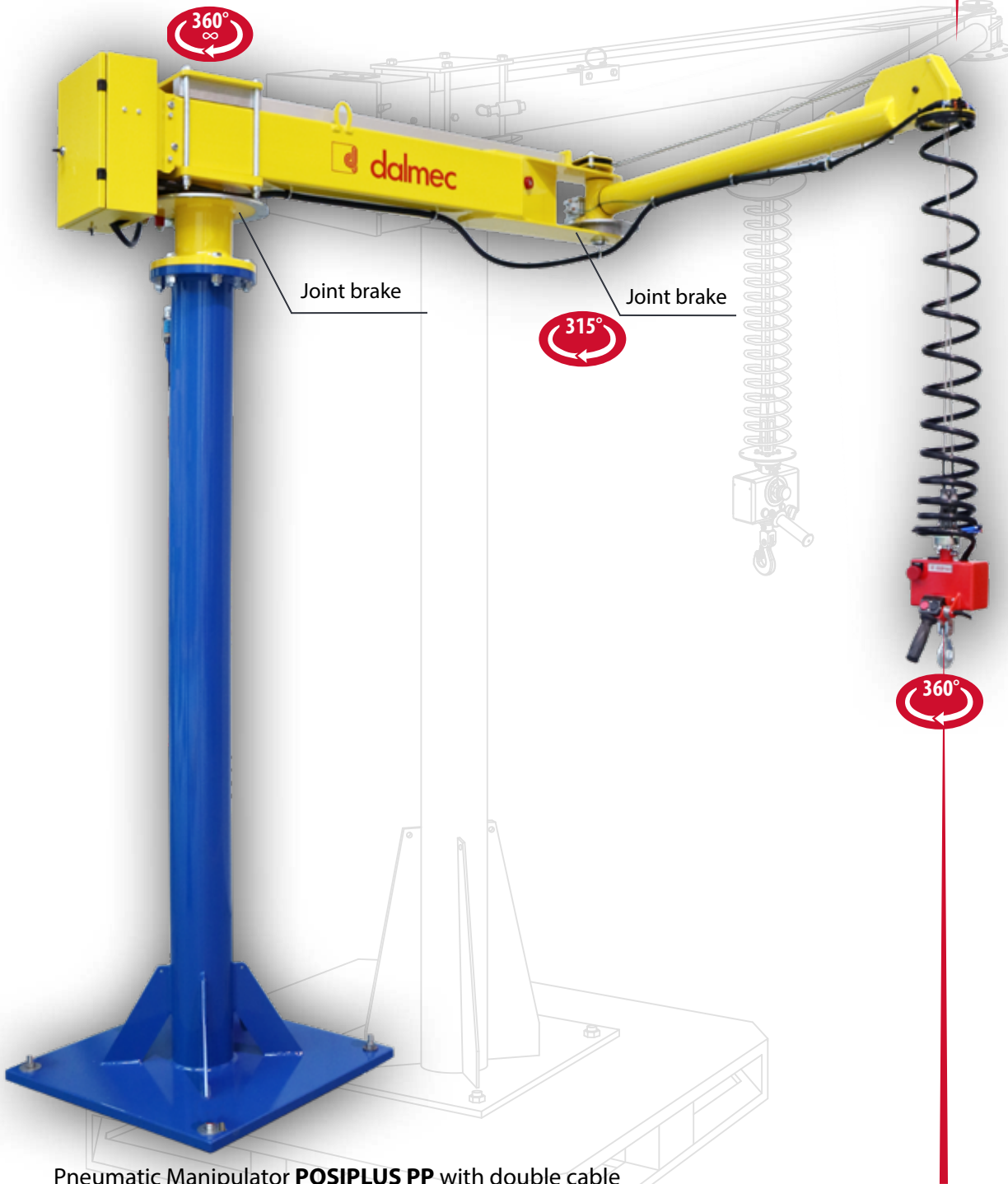




Industrial Manipulators



WEIGHT CAPACITY
200 Kg



RADIUS
4500 mm



PRESSURE
0.7-0.8 Mpa



VERTICAL LIFT
1900 mm



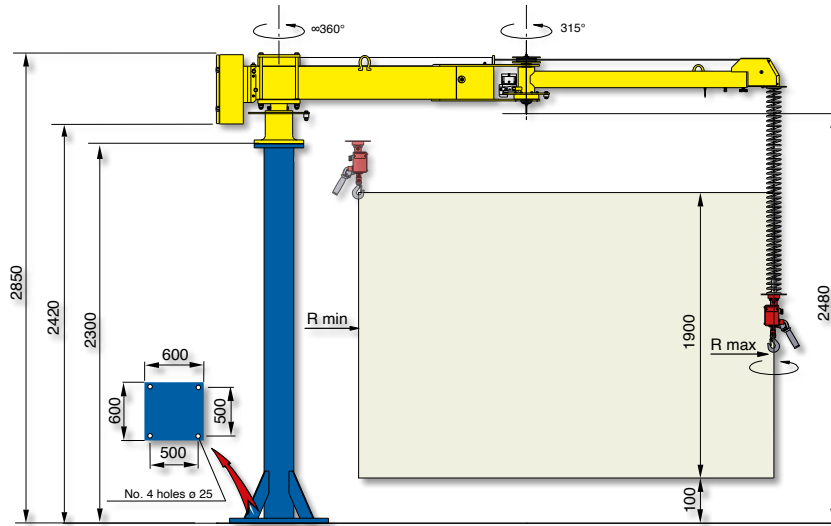
VERSIONS
COLUMN
FIXED
OVERHEAD
RUNNING
OVERHEAD

Pneumatic Manipulator **POSIPLUS PP** with double cable

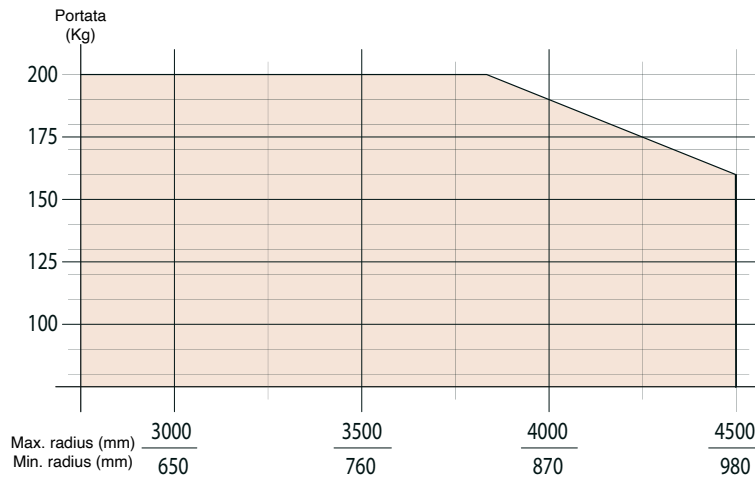
POSIPLUS PP, is a double rope manipulator with high load capacities, it is able to handle loads up to 200 kg and reaches working radii up to 4500 mm. The gripping tool is connected to the balancing group through two independent steel cables to ensure maximum safety. The particular double-arm structure with intermediate joint makes it easy to operate within the entire working area. Specific brakes mounted on the main joints guarantee control of drift movements.

POSIPLUS[®] - PP

Posiplus column mounted - PPC

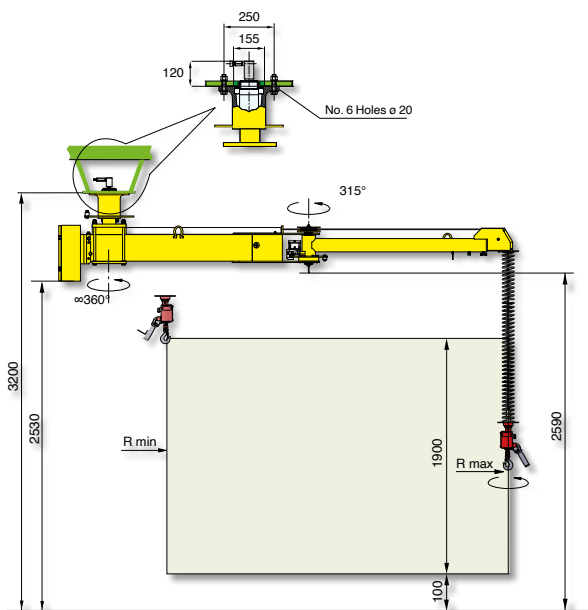


Structural versions: column mounted on fixed base-plate, autostable base-plate of our supply properly dimensioned.

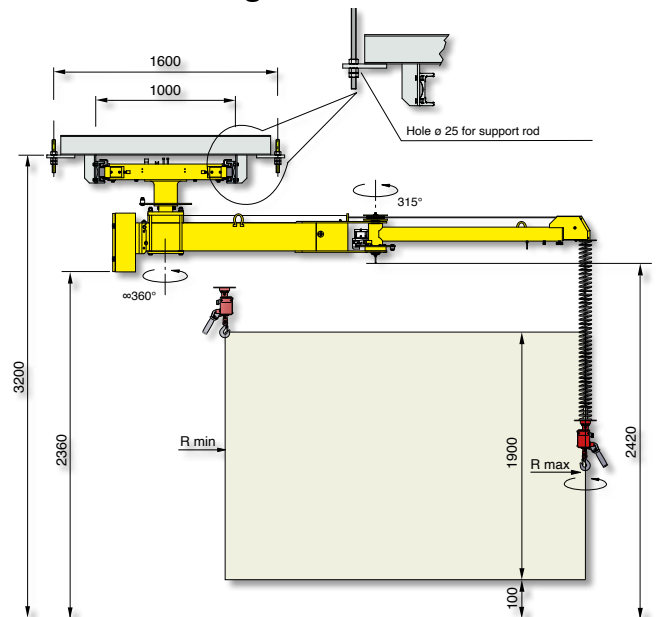


Posiplus overhead mounted

Fixed - PPF



Running - PPS



Air supply: Dry and oil-free compressed air min constant 0.7÷0.8 MPa